

v-ALARM

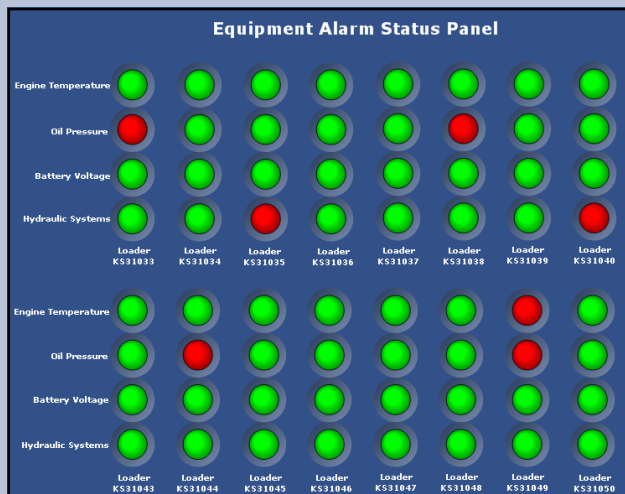
GSE Health Monitoring Module

..improve maintenance efficiency.....eliminate catastrophic equipment failures....improve equipment utilisation.....

When equipment goes wrong out on the ramp, the cost can be high — in terms of missed time slots, non-compliance with Service Level Agreements, and the expense of repairs.

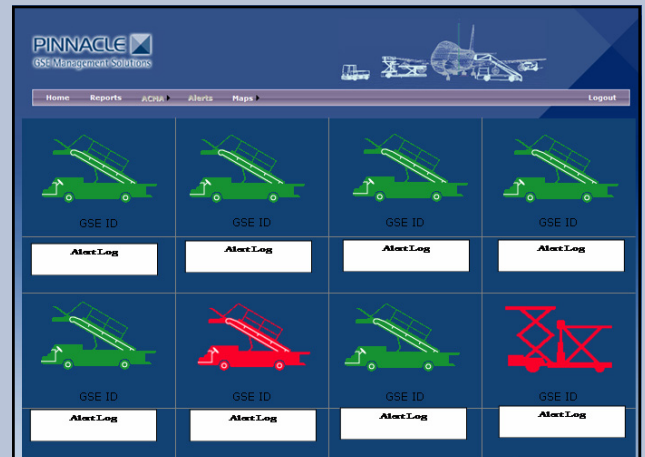
But many of these incidents can be avoided. Can you be sure that your operators take note of the condition of GSE when they are using it? Do they react in a timely manner to equipment alarms and warnings?

With **v-ALARM** you no longer need to rely on busy ramp staff to spot these warning signs. An add-on to our **VTIS v-HUB** system, **v-ALARM** monitors existing gauges and warning lights on your GSE — when an alarm condition occurs, **v-ALARM** triggers a warning message, which is transmitted wirelessly to our servers and then on to you. Via our **v-DASH** reporting system, you can view the alarm status of all your equipment in real-time. With the ability to receive instant notification of any issues, many incidents can be avoided completely or stopped before things deteriorate.



Alerts can also be received as SMS messages directly to maintenance staff, or as emails. If you have also opted for our **v-TRACK** airport mapping system, a configurable alert panel can be added, giving you one simple interface showing GSE location and health status.

v-ALARM is easy to install, involving a small amount of hardware in addition to the **v-HUB** telematics unit.



All vehicle data is hosted on our servers and is protected, secure and available 24/7.

Features

- Compatible with most existing vehicle gauges and warning light systems
- Easy to install
- Wide variety of alarms — oil pressure, high engine temperature, low battery voltage, hydraulic system pressure, etc.
- Simple, robust hardware
- Data can be viewed via secure, password-protected web-based reporting systems
- Compatible with **VTIS v-HUB** product range

Benefits

- Improved maintenance efficiency
- Reduced number of catastrophic failures
- Improved equipment utilisation
- Identify urgent maintenance requirements
- Reduced repair costs
- Increased GSE availability
- Longer equipment life
- Improved environmental performance
- Reduced maintenance call-outs
- Real-time notification of GSE problems

.....reduce maintenance call-outs.....increase availability.....reduce operating costs.....longer equipment life.....